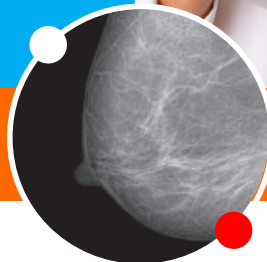




FULL CONTINUUM OF CARE

BREAST IMAGING

WE BRING BRILLIANCE TO HEALTH & WELLNESS



SERVICES THAT PROVIDE PEACE OF MIND FOR YOUR PATIENTS

When it comes to breast care, patients are looking for fast, accurate answers. We offer a full continuum of screening and diagnostic services from annual 3D screening mammograms to a full range of biopsy services and breast cancer risk assessment.

ON-SITE, SUBSPECIALIZED BREAST RADIOLOGISTS

Exams are read by board-certified radiologists who are specialized in breast imaging, breast cancer and early detection.

ADVANCED IMAGING SERVICES

- 3D (Tomosynthesis) mammography: Screening and diagnostic
- Biopsy: Stereotactic, US-guided or MRI-guided
- Diagnostic breast ultrasound
- Whole breast ultrasound for dense breast tissue
- Breast MRI (performed at our Bellevue, Federal Way, Issaquah and Poulsbo locations)
- Bone density scans: DXA and QCT
- Breast cancer risk assessment

LOCATIONS

BELLEVUE BREAST CENTER

Eastside Professional Center
1810 116th Avenue NE
Suite 101

CALL 425.974.1044
FAX 425.974.1033

BELLEVUE

(Breast MRI only)
1310 116th Avenue NE
Suite E

CALL 425.637.9729
FAX 425.462.8309

FEDERAL WAY

(Breast MRI only)
33801 First Way S
Suite 101

CALL 253.942.7226
FAX 253.942.3517

FEDERAL WAY BREAST CENTER

33801 First Way S
Suite 100

CALL 206.524.5599
FAX 206.524.5338

ISSAQUAH BREAST CENTER

1301 4th Avenue NW
Suite 203

CALL 425.637.0951
FAX 425.974.1033

ISSAQUAH

(Breast MRI only)
1301 4th Avenue NW
Suite 202

CALL 206.524.5599
FAX 206.524.5338

PORT ORCHARD

463 Tremont Street W
Suite 130

CALL 360.598.3141
FAX 360.598.3431

POULSBO

North Kitsap Medical Center
20700 Bond Road NE
Building B

CALL 360.598.3141
FAX 360.598.3431



Call Your Preferred Center

[RAYUSradiology.com/washington](https://www.rayusradiology.com/washington)

STAY CONNECTED     

OFFICIAL MEDICAL PROVIDER



SKI &
SNOWBOARD
OFFICIAL MEDICAL PROVIDER



BOBSLED &
SKELETON
PARTNER



US SPEED SKATING

BREAST IMAGING GUIDE

