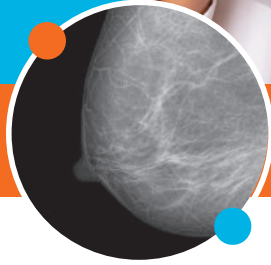


FULL CONTINUUM OF CARE
**BREAST
IMAGING**



WE BRING BRILLIANCE TO HEALTH & WELLNESS

SERVICES THAT PROVIDE PEACE OF MIND FOR YOUR PATIENTS

When it comes to breast care, patients are looking for fast, accurate answers. We offer a full continuum of screening and diagnostic services from annual 3D screening mammograms to a full range of biopsy services and breast cancer risk assessment.

ON-SITE, SUBSPECIALIZED BREAST RADIOLOGISTS

Exams are read by board-certified radiologists who are specialized in breast imaging, breast cancer and early detection.

ADVANCED IMAGING SERVICES

- 3D (Tomosynthesis) mammography: Screening and diagnostic
- Biopsy: Stereotactic, US-guided or MRI-guided
- Diagnostic breast ultrasound
- Whole breast ultrasound for dense breast tissue
- Breast MRI (performed at our Bellevue, Federal Way, Issaquah and Poulsbo locations)
- Bone density scans: DXA and QCT
- Breast cancer risk assessment

LOCATIONS

BELLEVUE BREAST CENTER
Eastside Professional Center
1810 116th Avenue NE
Suite 101
CALL 425.974.1044
FAX 425.974.1033

ISSAQUAH BREAST CENTER
1301 4th Avenue NW
Suite 203
CALL 425.637.0951
FAX 425.974.1033

BELLEVUE (Breast MRI only)
1310 116th Avenue NE
Suite E
CALL 425.637.9729
FAX 425.462.8309

ISSAQUAH (Breast MRI only)
1301 4th Avenue NW
Suite 202
CALL 206.524.5599
FAX 206.524.5338

FEDERAL WAY (Breast MRI only)
33801 First Way S
Suite 101
CALL 253.942.7226
FAX 253.942.3517

PORT ORCHARD
463 Tremont Street W
Suite 130
CALL 360.598.3141
FAX 360.598.3431

FEDERAL WAY BREAST CENTER
Omni Building
909 South 336th Street
Suite B101
CALL 253.735.1991
FAX 253.941.6941

POULSBO
North Kitsap Medical Center
20700 Bond Road NE
Building B
CALL 360.598.3141
FAX 360.598.3431



Call Your Preferred Center

RAYUSradiology.com/washington

STAY CONNECTED



BREAST IMAGING GUIDE

