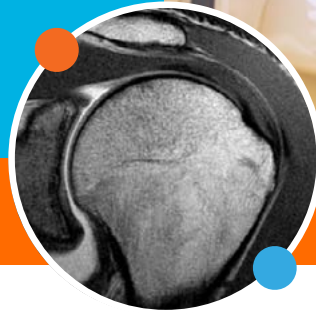


IN-NETWORK PAYERS



WE BRING BRILLIANCE TO HEALTH & WELLNESS

WE FULLY PARTICIPATE AS AN IN-NETWORK PROVIDER FOR ALL PAYER PLANS LISTED BELOW

- AARP MEDICARE COMPLETE
- ADVA HOLDINGS, LLC, DBA ADVA-NET
- AETNA HMO/PPO
- ALLEGIANCE
- AMERIBEN SOLUTIONS
- AMERICAS HEALTH PLAN
- AMERICAN HERITAGE
- AMERICAN INSURANCE CONSULTANTS
- AMERICAN MEDICAL SECURICITY
- AMERICAN NATIONAL
- AMERIHEALTH
- APWU
- ASSURANT HEALTHCARE
- AVMED
- BCE EMERGIS
- BEECHSTREET
- BENEFIT PLAN MANAGEMENT
- BENEFITS PLANNERS
- BENESIGHT
- BLUE CROSS/BLUE SHIELD (BCBS)
- CARE IQ (WORK COMP)
- CAREPLUS
- CHAMPVA
- CHESTERFIELD RESOURCES
- CIGNA HMO/PPO
- CINERGY HEALTHCARE
- CURACHOICE
- DEFINITY HEALTH
- DESERET SECURE
- DEVOTED HEALTH, INC.
- EMBLEM HEALTH/GHI
- EMPLOYERS HEALTH NETWORK
- EMPIRE PLAN(UHC)
- EVOLUTIONS HEALTHCARE
- FIRST HEALTH NETWORK
- FISERV (WORK COMP)
- FLORIDA HEALTH ALLIANCE
- FREEDOM HEALTH
- GEHA
- GOLDENRULE
- GREATWEST HEALTHCARE (NO FL CONNECT PLANS)
- HARRINGTON BENEFITS
- HEALTH SMART
- HEALTHSTAR
- HUMANA (NO MEDICAID)
- MAIL HANDLERS BENEFIT PLANS
- MEDICAID (NO CMS)
- MEDICARE
- MEDIPLUS
- MERITAIN
- MULTIPLAN NETWORK
- MUTUAL OF OMAHA
- NALC
- NAVIGERE (WORK COMP)
- OFFICE OF DISABILITY (MUST HAVE AUTH FIRST)
- ONE CALL MEDICAL (WORK COMP)
- ORANGE COUNTY MEDICAL (MUST HAVE AUTH FIRST)
- ORCHID MEDICAL (WORK COMP)
- ORLANDO VA (MUST HAVE AUTH FIRST)
- OXFORD
- PHCS NETWORK
- POMCO NY
- PREFERRED BENEFITS ADMINISTRATORS
- PREFERRED HEALTH
- PRIMARY CARE ALLIANCE, LLC
- PROMINENCE HEALTH PLAN
- QTC MEDICAL GROUP
- SIMPLAN PAYS
- STREAMLINE IMAGING (WORK COMP EFFECTIVE 8.1.2023)
- SUNBELT HEALTH & REHAB CTR-APOPKA (MSC, PA ONLY)
- SUNSHINE HEALTH (WP, OV, MW ONLY)
- STUDENT RESOURCES
- STAR HRG
- TOTAL NETWORK RESOURCES (WORK COMP)
- TRICARE
- UNICARE
- UNITED HEALTHCARE
- UMR (NO ORLANDO HEALTH GROUP)
- UNITED MINE WORKERS OF AMERICA
- UNITED PAYORS & PROVIDERS (UP & UP)
- VOCATIONAL REHAB (MUST HAVE AUTH FIRST)
- WDW WORK COMP
- WELLCARE
- AUTO INSURANCES (MUST HAVE CLAIM#, PHONE# & DOA)
- WORK COMP (MUST HAVE AUTH BEFORE PT IS SCHEDULED)
- ALL APPROVED LOP'S (AUTO ONLY) NO SLIP & FALLS

WE ARE OUT OF NETWORK WITH

- OSCAR
- BRIGHT HEALTH
- CIGNA HEALTHSPRINGS
- HEALTH CHOICE
- SIMPLY
- HUMANA MEDICAID
- GWH FL CONNECT
- ALL OUT OF STATE MEDICAID
- HEALTH FIRST HEALTH PLANS
- NO CARE CREDIT
- UHC SILVER-GROUP FLONEX

LOCATIONS

LADY LAKE
MAITLAND
METROWEST
TURKEY LAKE
OVIEDO
WINTER PARK



**SCHEDULE
A PATIENT**

EMAIL FLSCHEDULING@RAYUSRADIOLOGY.COM

ONLINE insideRAYUS.com
RAYUSradiology.com

TAX ID 41-1410766
NPI 1871560201

SHINE ON

RAYUS
RADIOLOGY™

LOCATIONS AND SERVICES

LOCATION

SERVICES

LADY LAKE

809 County Rd. 466
Suite 400
Lady Lake, FL 32159

CALL 352.753.2660
FAX 352.753.2259

- 3T MRI
- CT, CCTA
- PET/CT
- Lung cancer screening
- Coronary calcium screening

- Ultrasound
- 3D Mammography
- Biopsies
- Bone density DEXA
- X-Ray

MAITLAND

1640 N. Maitland Ave.
Suite 1020
Maitland, FL 32751

CALL 407.741.5400
FAX 407.629.6096

- 3T high-field, wide-bore MRI
- CT, CCTA
- Lung cancer screening
- Coronary calcium screening
- Ultrasound

- 3D Mammography
- Biopsies
- Bone density DEXA
- X-Ray

METROWEST

1781 Park Center Dr.
Suite 110
Orlando, FL 32835

CALL 407.741.5400
FAX 407.629.6096

- High-field MRI
- CT
- Lung cancer screening
- Ultrasound

- Arthrograms
- Spine & joint injections for pain management
- Biopsies
- X-Ray

OVIEDO

1000 W. Broadway St.
Suite 104
Oviedo, FL 32765

CALL 407.741.5400
FAX 407.629.6096

- High-field, MRI
- CT
- Lung cancer screening
- Ultrasound

- Arthrograms
- Spine & joint injections for pain management
- Biopsies
- X-Ray

TURKEY LAKE

9350 Turkey Lake Rd.
Suite 100
Orlando, FL 32819

CALL 407.741.5400
FAX 407.629.6096

- 3T MRI
- CT, CCTA
- PET/CT
- Lung cancer screening
- Coronary calcium screening

- Ultrasound
- 3D Mammography
- Biopsies
- Bone density DEXA
- Nuclear medicine
- X-Ray

WINTER PARK

964 S. Orlando Ave.
Winter Park, FL 32789

CALL 407.741.5400
FAX 407.629.6096

- 3T MRI
- CT
- Ultrasound
- Arthrograms

- Spine & joint injections for pain management
- Biopsies
- X-Ray