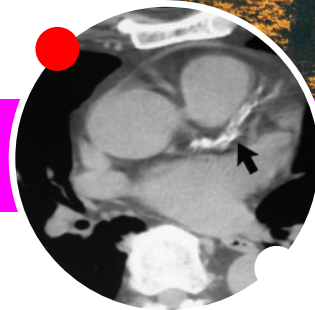




WE BRING BRILLIANCE TO HEALTH & WELLNESS



Heart CT, also called Coronary Artery Calcium Scoring, can detect signs of heart disease at an early stage and help you take charge of your heart health.

It is a simple, non-invasive CT exam that evaluates the extent of calcified plaque buildup in the arteries of the heart. This can be an indicator of coronary artery disease (CAD). The higher the score, the higher the risk of a cardiac event. If you have CAD, you can make lifestyle changes or plan treatment options with your doctor.

The exam may be useful for women 45–70 years old and men 40–70 years old with any of these risk factors:

- Family history of heart disease
- Smoking
- High cholesterol
- Diabetes
- High blood pressure
- Excess weight

If you are experiencing heart symptoms or have a history of coronary artery disease, you should not have this exam. Talk to your doctor about your options.

Avoid caffeine and other stimulants for three hours before your appointment. The entire exam takes less than 30 minutes.

Approximately 1–2 weeks following your exam, you'll receive a copy of your report with your calcium score. If your report warrants follow-up, your doctor will be able to use the information to determine a treatment plan that's right for you.

OFFICIAL MEDICAL
PROVIDER



SCHEDULE AN
APPOINTMENT

MANSFIELD

2975 E. Broad St.
Suite 101
Mansfield, TX 76063
CALL 214.420.5400

MCKINNEY

7300 Eldorado Pkwy.
Suite 170
McKinney, TX 75070
CALL 972.920.0120

RAYUSradiology.com/texas

This exam requires a doctor's referral and is not usually covered by insurance. Payment is due at the time of service. Ask for a current price quote at the time of scheduling.

RAYUS Radiology centers in the Dallas/Fort Worth area are operated by Methodist CDI, a Texas non-profit corporation, and are staffed by independently practicing physicians who are contracted by Methodist CDI. The physicians and staff who provide services at the imaging centers are not employees or agents of nor subject to the control or supervision of Center for Diagnostic Imaging, Inc., d/b/a RAYUS Radiology or any of its affiliate companies, or Methodist Health System or any of its affiliated hospitals.

©2023, RAYUS Radiology, Updated 8/23, TX-6240

