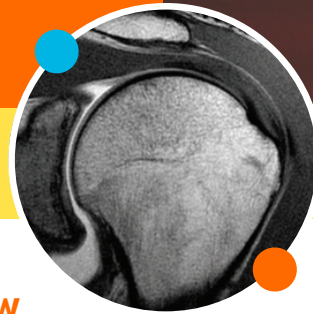


IN-NETWORK PAYERS

WE BRING BRILLIANCE TO HEALTH & WELLNESS

WE FULLY PARTICIPATE AS AN IN-NETWORK PROVIDER FOR ALL PAYER PLANS LISTED BELOW

- AARP Medicare Complete UHC
- AARP Medicare Sup
- Adin Healthcare
- Aetna
- Aetna Better Health
- Aetna Medicare
- Aetna Student Health
- Allied Benefits – Aetna
- Allsavers (AMS)
- Altrua
- American Medical Security – UHC
- Anthem BCBS
- Anthem Federal
- Anthem Indy Medicaid
- Anthem Medicare Advantage
- APWU Care Allies – Cigna
- Benefit Admin Systems (BAS)
- BCBS OOS (Out of State)
- CCMSI
- Central Reserve Life – Cigna
- ChampVA
- Choice Care Network (CCN)
- Cigna
- Cigna GWH
- Cigna Link
- Cigna Medicare Supplement
- Cigna NALC
- Cigna Ntl Health Ins Co – Med Sup
- Cigna Samba
- Community Health Direct
- CoreChoice
- Corvel
- Cypress Care
- Desert Mutual
- Encore
- EviCore
- GEHA
- Golden Rule – UHC
- Great West – Cigna
- Health Alliance
- Health Partners
- Health Plans Inc
- Hope Health Care
- Humana
- Humana Gold
- Humana Medicare
- IlliniCare
- IU Health (Tier 2)
- Key Benefit Admin MPBS
- MDWise
- Medica (UHC)
- Medical Diagnostic Associates (MDIA)
- Medicare
- MediShare
- Meridian Health Plan
- Meritain Health – Aetna
- Multiple Sclerosis Association of America
- National Association of Preferred Providers (NAPP)
- National Preferred Provider Network (NPPN)
- Objective Dx – WC
- One Call Medical
- (PHCS) Group & Pension Admin Inc (GPA)
- Preferred Care
- Priority Health – PHCS
- Private Healthcare Systems (PHCS)
- Professional Benefit Admin (PBA)
- Reserve National
- Sagamore
- Secure Horizons
- SIHO
- Sterling Options 1 PFFS
- Tech Health
- Three Rivers Provider Network
- Tricare East – Humana
- Tricare For Life
- Trustmark/Starmark/Aetna
- UHC Medicare Sup
- UMR
- Unicare Choice & PFFS
- United Healthcare
- United Healthcare Dual Care Complete
- US Dept of Labor
- Veteran's Choice (Health Choice)



OFFICIAL MEDICAL
PROVIDER



US SPEEDSKATING



LOCATIONS

AVON
BLOOMINGTON
CARMEL
FISHERS
GREENWOOD
INDIANAPOLIS E
INDIANAPOLIS NW
LAFAYETTE
MUNCIE
NOBLESVILLE
TERRE HAUTE



**MORE
INFO**

**CALL 800.537.0005
FAX 317.846.0557**

SHINE ON

RAYUS
RADIOLOGY™

LOCATIONS AND SERVICES

SAME-DAY AND NEXT-DAY APPOINTMENTS

We are here when you need us. We offer same-day and next-day appointments* with evening and weekend hours. Our regular hours are Monday – Friday 8:00 AM – 4:00 PM, and our MRI hours are listed below.

LOCATION	MRI HOURS	SERVICES
AVON 8607 E. US Hwy. 36 Suite 200 Avon, IN 46123	MON – FRI: 7:00 AM – 10:30 PM SAT & SUN: 8:00 AM – 8:00 PM	<ul style="list-style-type: none"> ● High-field oval MRI ● CT ● Diagnostic & therapeutic injections ● Arthrograms ● Bone density (DXA) ● 3D mammography ● Ultrasound ● X-ray (M – F: 8 AM – 4 PM)
BLOOMINGTON 3802 Industrial Blvd. Suite 4 Bloomington, IN 47403	MON – FRI: 8:00 AM – 8:30 PM SAT: 8:00 AM – 8:00 PM	<ul style="list-style-type: none"> ● High-field open MRI ● CT ● Lung cancer screening
CARMEL 11900 N. Pennsylvania St. Suite 100 Carmel, IN 46032	MON – FRI: 7:00 AM – 10:30 PM SAT: 7:30 AM – 4:00 PM	<ul style="list-style-type: none"> ● 3T MRI ● High-field, wide-bore MRI ● CT ● Diagnostic & therapeutic injections ● Bone density (DXA & QCT) ● Nuclear medicine ● Regenerative medicine ● Ultrasound ● X-ray (M – F: 8 AM – 4:30 PM) ● Kyphoplasty
FISHERS 10206 Lantern Rd. Fishers, IN 46037	MON – FRI: 7:30 AM – 10:30 PM SAT: 8:00 AM – 9PM	<ul style="list-style-type: none"> ● High-field oval MRI ● CT ● Diagnostic & therapeutic injections ● X-ray (M – F: 8 AM – 4 PM)
GREENWOOD 521 E. County Line Rd., Suite D Greenwood, IN 46143	MON – FRI: 7:00 AM – 10:30 PM SAT & SUN: 7:00 AM – 10:30 PM	<ul style="list-style-type: none"> ● 3T MRI ● High-field, wide-bore MRI ● CT ● Bone density (QCT) ● Diagnostic & therapeutic injections ● Ultrasound ● X-ray (M – F: 8 AM – 4:30 PM)
INDIANAPOLIS E 1250 N. Post Rd., Suite A Indianapolis, IN 46219	MON – FRI: 7:30 AM – 8:00 PM	<ul style="list-style-type: none"> ● High-field, wide-bore MRI ● CT ● X-ray (M – F: 8 AM – 4 PM)
INDIANAPOLIS NW 7151 Marsh Rd., Suite 100 Indianapolis, IN 46278	MON – FRI: 7:30 AM – 4:00 PM	<ul style="list-style-type: none"> ● High-field MRI ● CT ● Bone density (DXA) ● 3D mammography ● Ultrasound ● X-ray (M – F: 8 AM – 4 PM)
LAFAYETTE 3738 Landmark Dr. Suite D Lafayette, IN 47905	MON – FRI: 7:30 AM – 10:30 PM SAT: 7:30 AM – 8:00 PM	<ul style="list-style-type: none"> ● High-field MRI ● High-field open MRI ● CT ● X-ray (M – F: 8:30 AM – 4:30 PM)
MUNCIE 3631 N. Morrison Rd. Suite 105 Muncie, IN 47304	MON – FRI: 7:30 AM – 4:30 PM	<ul style="list-style-type: none"> ● High-field MRI ● CT ● Nuclear medicine ● Bone density (DXA) ● 3D mammography ● Ultrasound ● X-ray (M – F: 8 AM – 4:30 PM)
NOBLESVILLE 13436 Tegler Dr., Suite 400 Noblesville, IN 46060	MON – FRI: 7:30 AM – 8:00 PM	<ul style="list-style-type: none"> ● High-field MRI ● High-field open MRI ● CT
TERRE HAUTE 4313 S. 7th St. Terre Haute, IN 47802	MON – FRI: 7:30 AM – 9:30 PM SAT: 8:00 AM – 4:00 PM	<ul style="list-style-type: none"> ● High-field MRI ● High-field open MRI ● CT ● Lung cancer screening

*Availability depends on contrast and insurance authorization.