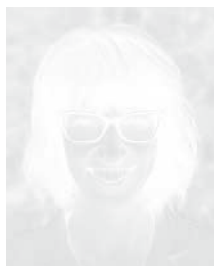


BREAST CARE NURSE NAVIGATORS

Marloe Esch, BSN, RN, OCN and Joan Bink, BSN, RN are breast care nurse navigators with Froedtert & the Medical College of Wisconsin RAYUS Radiology. As breast care nurse navigators, Marloe and Joan provide support, resources and the knowledge necessary for you to make informed decisions regarding your health. They will work with you and serve as a liaison between you and your doctor to coordinate your needs across the continuum of breast care services.

They are dedicated to raising awareness and knowledge around breast care prevention, risk reduction and emphasizing the life-saving value of regular screening mammograms in the early detection of breast cancer. For those confronting a cancer diagnosis, Marloe and Joan are committed to providing guidance on your road back to wellness and recovery.



Marloe Esch,
BSN, RN, OCN



Joan Bink,
BSN, RN



**SCHEDULE A
CONSULTATION**

CALL 262.240.3808

SHINE ON



Froedtert Hospital

