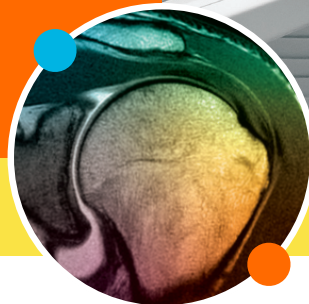


A TRULY OPEN EXPERIENCE

HIGH-FIELD OPEN MRI



WE BRING BRILLIANCE TO HEALTH & WELLNESS

PROVIDES THE COMFORT OF AN OPEN DESIGN WITH CLEAR, HIGH-QUALITY IMAGES

- The high-field open MRI is a truly open MRI, with 270 degrees of unobstructed views
- Ideal for patients who are claustrophobic, bariatric (up to 660 lbs.) or larger in size
- Interpretations by on-site, subspecialized radiologists who have helped develop customized protocols to maximize scanner image quality
- Image quality guarantee on all of our scanners

AVAILABLE IN

KIRKLAND

12112 115th Ave. NE, Suite B
Kirkland, WA 98034

PUYALLUP

2930 S. Meridian, Suite 160
Puyallup, WA 98373



**SCHEDULE
A PATIENT**

CALL 855.643.7226

FAX 855.550.2005

ONLINE [insideRAYUS.com](https://www.insiderayus.com)

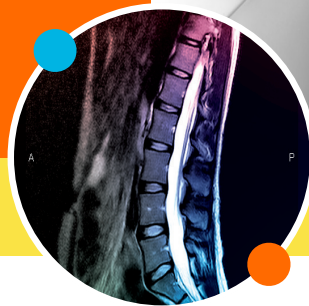
[RAYUSradiology.com](https://www.rayusradiology.com)

SHINE ON



WIDE-OPEN COMFORT

OPEN UPRIGHT MRI



WE BRING BRILLIANCE TO HEALTH & WELLNESS

WASHINGTON STATE'S ONLY OPEN UPRIGHT MRI

- The Open Upright MRI is a versatile scanner that has no enclosure
- Patients may sit or lie down during their exam
- Accommodates patients up to 500 lbs
- Patients may be able to watch TV or DVDs brought from home, depending on what body part is being scanned
- Weight-bearing and flexion/extension imaging of the cervical and lumbar spine
- Positional imaging (standing, sitting, bending, twisting) to evaluate patients in the positions that reproduce symptoms

AVAILABLE IN

RENTON

220 SW 43rd St.
Renton, WA 98057



**SCHEDULE
A PATIENT**

CALL 855.643.7226

FAX 855.550.2005

ONLINE [insideRAYUS.com](https://www.insiderayus.com)

[RAYUSradiology.com](https://www.rayusradiology.com)

SHINE ON

