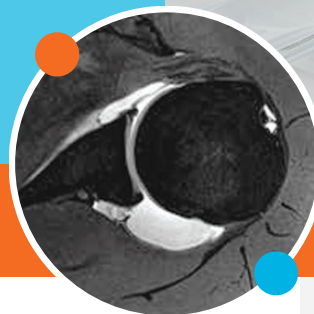


ARTHROGRAPHY

IMAGE-GUIDED INJECTIONS TO DIAGNOSE JOINT PAIN

WE BRING BRILLIANCE TO HEALTH & WELLNESS



WHEN YOUR PATIENTS HAVE JOINT PAIN, THEY WANT RELIEF

While non-contrast MRI exams can diagnose many types of pathology, there are many joint-specific conditions where contrast injected during an arthrogram may aid in diagnosing joint disorders.

CLINICAL INDICATIONS WHERE ARTHROGRAPHY MAY AID IN DETECTION/CHARACTERIZATION OF INTERNAL DERANGEMENT

KNEE

- Post-op meniscal repair
- Characterization of osteochondral lesions

HIP

- Femoroacetabular impingement
- Post-op labral surgery
- Suspected labral tear

WRIST

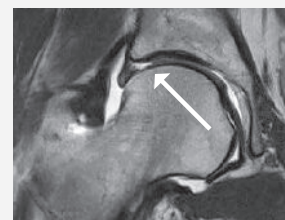
- Ulnar-sided wrist pain
- Dissociation of the proximal carpal row on X-ray

ELBOW

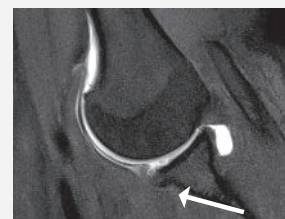
- Medial elbow pain in the throwing athlete
- Characterization of osteochondral lesions

SHOULDER

- Pain with overhand motion (throwing)
- Instability
- Suspected small or incomplete rotator cuff tears
- Post-op rotator cuff repair
- Post-op labral repair



MR Arthrogram hip
demonstrating labral tear



MR Arthrogram shoulder
demonstrating labral tear with
associated hyaline cartilage lesion

CONTRAINDICATIONS

Relative contraindications, including joint infections, should be discussed with the radiologist.

The radiologists are available to consult on a patient-by-patient basis to determine if an image-guided injection procedure is appropriate.



**SCHEDULE
A PATIENT**

CALL 407.741.5400

FAX 407.629.6096

ONLINE [insiderayus.com](https://www.insiderayus.com)

EMAIL FLscheduling@RAYUSradiology.com



LOCATIONS

LADY LAKE
MAITLAND
METROWEST
ORLANDO
ORLANDO-TURKEY LAKE
OVIEDO
WINTER PARK

TAX ID 41-1410766

NPI 1871560201