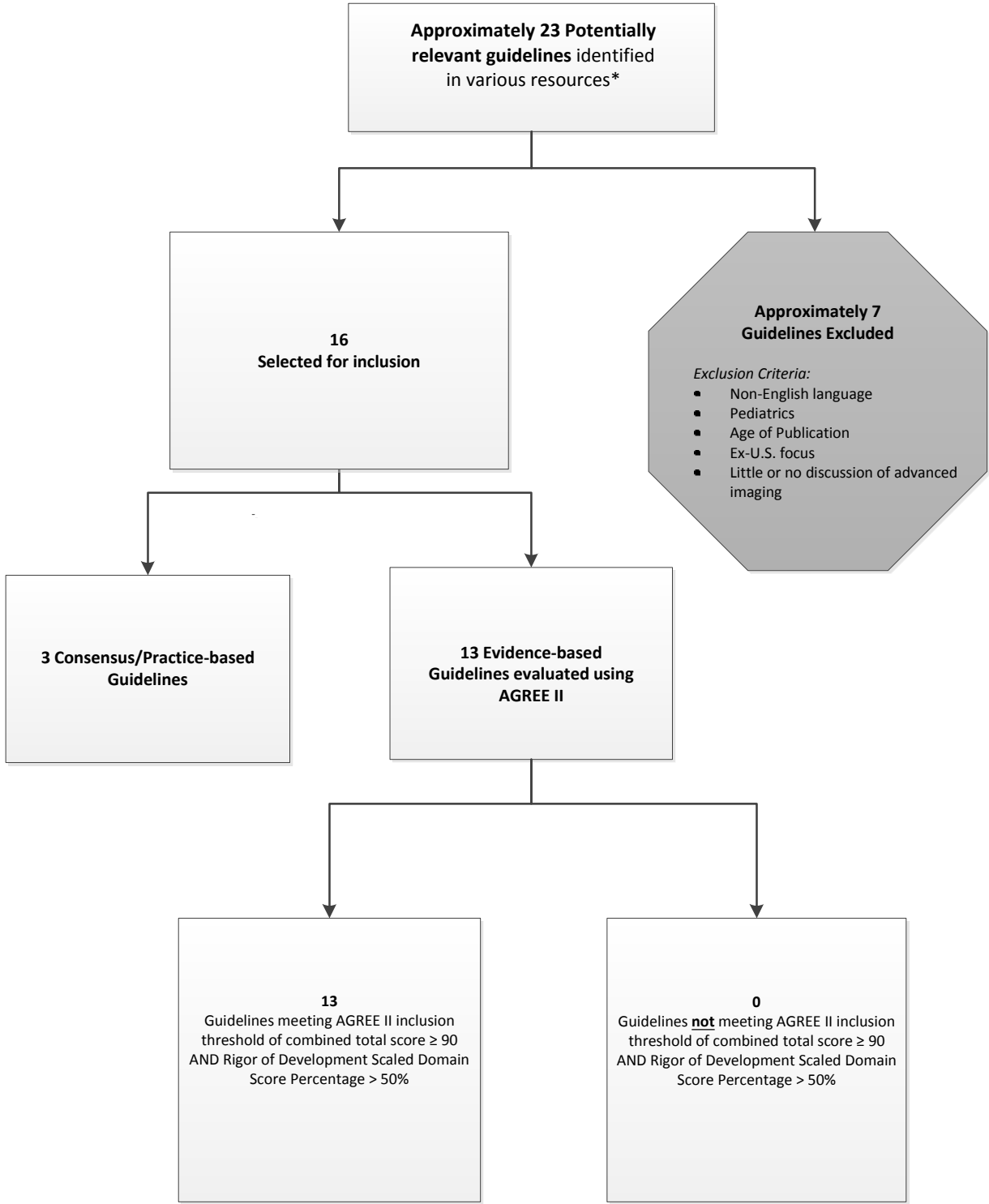


Evidence Process for CAD Guideline Research
Guideline Review using AGREE II instrument – February 2021



*Information Resources:
Ovid Medline, NCBI PubMed, National Guideline Clearinghouse, Guidelines International Network, TRIP Database, Choosing Wisely, Cochrane Database, Agency for Healthcare Research and Quality, and numerous specialty society websites
Additional Internet and bibliographic searches were performed for all phases of research

(noninvasive fractional flow reserve OR noninvasive FFR OR coronary CT angiography OR coronary computed tomography angiography OR coronary angiography OR nuclear myocardial perfusion OR magnetic resonance perfusion OR myocardial perfusion scintigraphy OR SPECT OR stress echocardiography OR stress perfusion OR stress myocardial perfusion OR dobutamine stress) Filters: Clinical Trial, Meta-Analysis, Randomized Controlled Trial, Systematic Review, Humans, English, Adult: 19+ years, from 2015 - 2021

((("noninvasive"[All Fields] OR "noninvasively"[All Fields] OR "noninvasiveness"[All Fields]) AND "fractional"[All Fields] AND "flow"[All Fields] AND ("reserve"[All Fields] OR "reserve s"[All Fields] OR "reserves"[All Fields])) OR ((("noninvasive"[All Fields] OR "noninvasively"[All Fields] OR "noninvasiveness"[All Fields]) AND "FFR"[All Fields]) OR ((("coronaries"[All Fields] OR "heart"[MeSH Terms] OR "heart"[All Fields] OR "coronary"[All Fields]) AND ("computed tomography angiography"[MeSH Terms] OR ("computed"[All Fields] AND "tomography"[All Fields] AND "angiography"[All Fields]) OR "computed tomography angiography"[All Fields] OR ("ct"[All Fields] AND "angiography"[All Fields]) OR "ct angiography"[All Fields])) OR ((("coronaries"[All Fields] OR "heart"[MeSH Terms] OR "heart"[All Fields] OR "coronary"[All Fields]) AND ("computed tomography angiography"[MeSH Terms] OR ("computed"[All Fields] AND "tomography"[All Fields] AND "angiography"[All Fields]) OR "computed tomography angiography"[All Fields])) OR ("coronary angiography"[MeSH Terms] OR ("coronary"[All Fields] AND "angiography"[All Fields]) OR "coronary angiography"[All Fields]) OR ((("nuclear"[All Fields] OR "nuclears"[All Fields]) AND ("myocardially"[All Fields] OR "myocardium"[MeSH Terms] OR "myocardium"[All Fields] OR "myocardial"[All Fields]) AND ("perfusable"[All Fields] OR "perfusate"[All Fields] OR "perfusates"[All Fields] OR "perfuse"[All Fields] OR "perfused"[All Fields] OR "perfuses"[All Fields] OR "perfusing"[All Fields] OR "perfusion"[MeSH Terms] OR "perfusion"[All Fields] OR "perfusions"[All Fields])) OR ((("magnetic resonance spectroscopy"[MeSH Terms] OR ("magnetic"[All Fields] AND "resonance"[All Fields] AND "spectroscopy"[All Fields]) OR "magnetic resonance spectroscopy"[All Fields] OR ("magnetic"[All Fields] AND "resonance"[All Fields]) OR "magnetic resonance"[All Fields]) AND ("perfusable"[All Fields] OR "perfusate"[All Fields] OR "perfusates"[All Fields] OR "perfuse"[All Fields] OR "perfused"[All Fields] OR "perfuses"[All Fields] OR "perfusing"[All Fields] OR "perfusion"[MeSH Terms] OR "perfusion"[All Fields] OR "perfusions"[All Fields])) OR ((("myocardially"[All Fields] OR "myocardium"[MeSH Terms] OR "myocardium"[All Fields] OR "myocardial"[All Fields]) AND ("perfusion imaging"[MeSH Terms] OR ("perfusion"[All Fields] AND "imaging"[All Fields]) OR "perfusion imaging"[All Fields] OR ("perfusion"[All Fields] AND "scintigraphy"[All Fields]) OR "perfusion scintigraphy"[All Fields])) OR ("spect s"[All Fields] OR "tomography, emission computed, single photon"[MeSH Terms] OR

("tomography"[All Fields] AND "emission computed"[All Fields] AND "single photon"[All Fields]) OR "single-photon emission-computed tomography"[All Fields] OR "spect"[All Fields] OR "spectr"[All Fields] OR ("echocardiography, stress"[MeSH Terms] OR ("echocardiography"[All Fields] AND "stress"[All Fields]) OR "stress echocardiography"[All Fields] OR ("stress"[All Fields] AND "echocardiography"[All Fields])) OR (("stress"[All Fields] OR "stressed"[All Fields] OR "stresses"[All Fields] OR "stressful"[All Fields] OR "stressfulness"[All Fields] OR "stressing"[All Fields]) AND ("perfusable"[All Fields] OR "perfusate"[All Fields] OR "perfusates"[All Fields] OR "perfuse"[All Fields] OR "perfused"[All Fields] OR "perfuses"[All Fields] OR "perfusing"[All Fields] OR "perfusion"[MeSH Terms] OR "perfusion"[All Fields] OR "perfusion"[All Fields])) OR (("stress"[All Fields] OR "stressed"[All Fields] OR "stresses"[All Fields] OR "stressful"[All Fields] OR "stressfulness"[All Fields] OR "stressing"[All Fields]) AND ("myocardially"[All Fields] OR "myocardium"[MeSH Terms] OR "myocardium"[All Fields] OR "myocardial"[All Fields]) AND ("perfusable"[All Fields] OR "perfusate"[All Fields] OR "perfusates"[All Fields] OR "perfuse"[All Fields] OR "perfused"[All Fields] OR "perfuses"[All Fields] OR "perfusing"[All Fields] OR "perfusion"[MeSH Terms] OR "perfusion"[All Fields] OR "perfusion"[All Fields])) OR ("dobutamine"[MeSH Terms] OR "dobutamine"[All Fields] OR "dobutamin"[All Fields] OR "dobutamine s"[All Fields]) AND ("stress"[All Fields] OR "stressed"[All Fields] OR "stresses"[All Fields] OR "stressful"[All Fields] OR "stressfulness"[All Fields] OR "stressing"[All Fields])) AND ((clinicaltrial[Filter] OR meta-analysis[Filter] OR randomizedcontrolledtrial[Filter] OR systematicreview[Filter]) AND (humans[Filter]) AND (english[Filter]) AND (alladult[Filter]) AND (2015:2021[pdat]))

Translations

noninvasive: "noninvasive"[All Fields] OR "noninvasively"[All Fields] OR "noninvasiveness"[All Fields]

reserve: "reserve"[All Fields] OR "reserve's"[All Fields] OR "reserves"[All Fields]

noninvasive: "noninvasive"[All Fields] OR "noninvasively"[All Fields] OR "noninvasiveness"[All Fields]

coronary: "coronaries"[All Fields] OR "heart"[MeSH Terms] OR "heart"[All Fields] OR "coronary"[All Fields]

CT angiography: "computed tomography angiography"[MeSH Terms] OR ("computed"[All Fields] AND "tomography"[All Fields] AND "angiography"[All Fields]) OR "computed tomography angiography"[All Fields] OR ("ct"[All Fields] AND "angiography"[All Fields]) OR "ct angiography"[All Fields]

coronary: "coronaries"[All Fields] OR "heart"[MeSH Terms] OR "heart"[All Fields] OR "coronary"[All Fields]

computed tomography angiography: "computed tomography angiography"[MeSH Terms] OR ("computed"[All Fields] AND "tomography"[All Fields] AND "angiography"[All Fields]) OR "computed tomography angiography"[All Fields]

coronary angiography: "coronary angiography"[MeSH Terms] OR ("coronary"[All Fields] AND "angiography"[All Fields]) OR "coronary angiography"[All Fields]

nuclear: "nuclear"[All Fields] OR "nuclears"[All Fields]

myocardial: "myocardially"[All Fields] OR "myocardium"[MeSH Terms] OR "myocardium"[All Fields] OR "myocardial"[All Fields]

perfusion: "perfusable"[All Fields] OR "perfusate"[All Fields] OR "perfusates"[All Fields] OR "perfuse"[All Fields] OR "perfused"[All Fields] OR "perfuses"[All Fields] OR "perfusing"[All Fields] OR "perfusion"[MeSH Terms] OR "perfusion"[All Fields] OR "perfusions"[All Fields]

magnetic resonance: "magnetic resonance spectroscopy"[MeSH Terms] OR ("magnetic"[All Fields] AND "resonance"[All Fields] AND "spectroscopy"[All Fields]) OR "magnetic resonance spectroscopy"[All Fields] OR ("magnetic"[All Fields] AND "resonance"[All Fields]) OR "magnetic resonance"[All Fields]

perfusion: "perfusable"[All Fields] OR "perfusate"[All Fields] OR "perfusates"[All Fields] OR "perfuse"[All Fields] OR "perfused"[All Fields] OR "perfuses"[All Fields] OR "perfusing"[All Fields] OR "perfusion"[MeSH Terms] OR "perfusion"[All Fields] OR "perfusions"[All Fields]

myocardial: "myocardially"[All Fields] OR "myocardium"[MeSH Terms] OR "myocardium"[All Fields] OR "myocardial"[All Fields]

perfusion scintigraphy: "perfusion imaging"[MeSH Terms] OR ("perfusion"[All Fields] AND "imaging"[All Fields]) OR "perfusion imaging"[All Fields] OR ("perfusion"[All Fields] AND "scintigraphy"[All Fields]) OR "perfusion scintigraphy"[All Fields]

SPECT: "spect's"[All Fields] OR "tomography, emission-computed, single-photon"[MeSH Terms] OR ("tomography"[All Fields] AND "emission-computed"[All Fields] AND "single-photon"[All Fields]) OR "single-photon emission-computed tomography"[All Fields] OR "spect"[All Fields] OR "spect's"[All Fields]

stress echocardiography: "echocardiography, stress"[MeSH Terms] OR ("echocardiography"[All Fields] AND "stress"[All Fields]) OR "stress echocardiography"[All Fields] OR ("stress"[All Fields] AND "echocardiography"[All Fields])

stress: "stress"[All Fields] OR "stressed"[All Fields] OR "stresses"[All Fields] OR "stressful"[All Fields] OR "stressfulness"[All Fields] OR "stressing"[All Fields]

perfusion: "perfusable"[All Fields] OR "perfusate"[All Fields] OR "perfusates"[All Fields] OR "perfuse"[All Fields] OR "perfused"[All Fields] OR "perfuses"[All Fields] OR "perfusing"[All Fields] OR "perfusion"[MeSH Terms] OR "perfusion"[All Fields] OR "perfusions"[All Fields]

stress: "stress"[All Fields] OR "stressed"[All Fields] OR "stresses"[All Fields] OR "stressful"[All Fields] OR "stressfulness"[All Fields] OR "stressing"[All Fields]

myocardial: "myocardially"[All Fields] OR "myocardium"[MeSH Terms] OR "myocardium"[All Fields] OR "myocardial"[All Fields]

perfusion: "perfusable"[All Fields] OR "perfusate"[All Fields] OR "perfusates"[All Fields]
OR "perfuse"[All Fields] OR "perfused"[All Fields] OR "perfuses"[All Fields] OR
"perfusing"[All Fields] OR "perfusion"[MeSH Terms] OR "perfusion"[All Fields] OR
"perfusions"[All Fields]

dobutamine: "dobutamine"[MeSH Terms] OR "dobutamine"[All Fields] OR
"dobutamin"[All Fields] OR "dobutamine's"[All Fields]

stress: "stress"[All Fields] OR "stressed"[All Fields] OR "stresses"[All Fields] OR
"stressful"[All Fields] OR "stressfulness"[All Fields] OR "stressing"[All Fields]

2,200 abstract results.

74 abstracts selected for review.