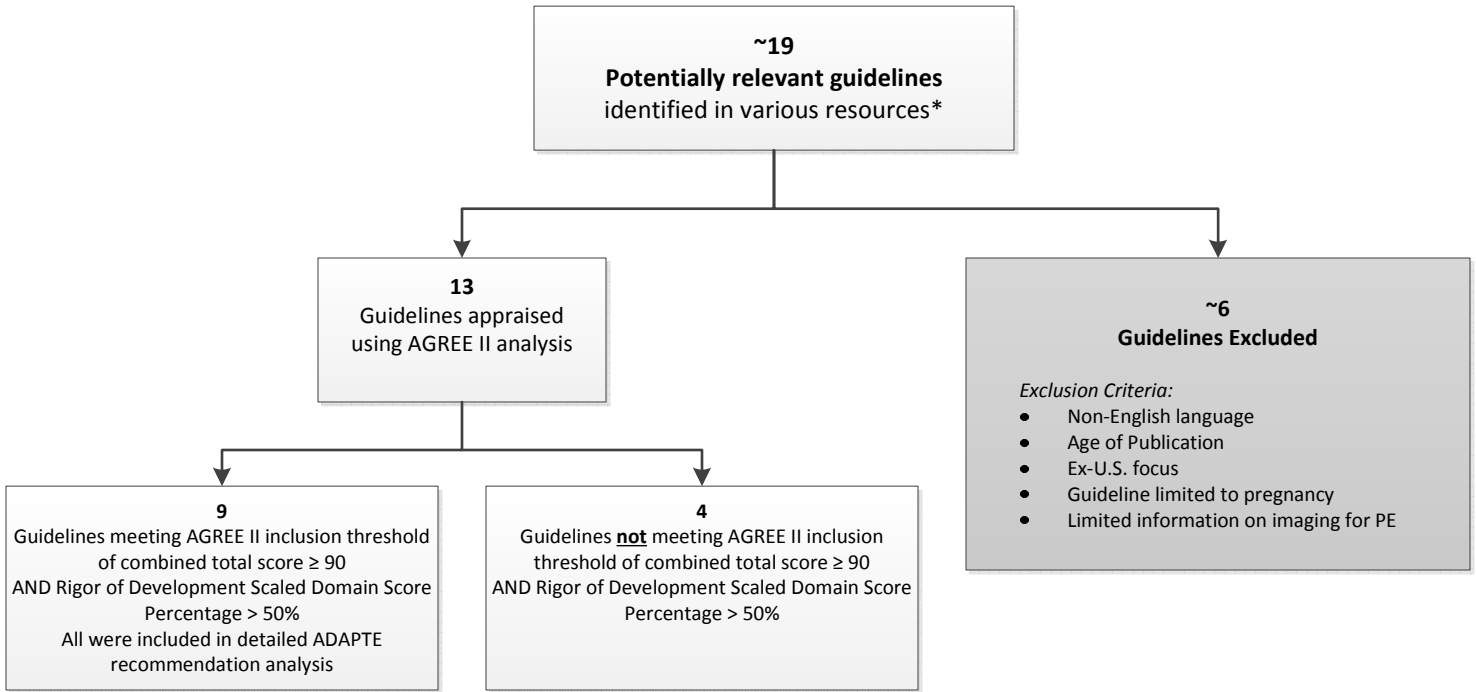


**Guideline Review using ADAPTE method and AGREE II instrument – as of 05-30-17**



**Systematic Literature Research – Ovid Embase and Medline Databases (01/01/2010 – 06/05/2017)**

**109 Results**

High-Level Research Search Strategy: Search run on 05/25/2017

((pulmonary embolism or pulmonary thromboembolism) NOT pregnancy) AND  
 (imaging or (CT or computed tomography) or (MRI or magnetic resonance) or (CTA or CT angiography) or (MRA or magnetic resonance angiography or MR angiography) or (PET or position emission tomography) or (SPECT or bone scan)) AND  
 (systemati\* review or (randomiz\* control\* or RCT or randomized controlled trial\*) or guidance or guideline or recommendation or (meta analysis or meta-analysis)) AND  
 limit to (english language and humans)  
 limit to (meta analysis or randomized controlled trial or systematic reviews)  
 limit to (yr="2010 -Current"))

**632 Results**

Prospective Study Search Strategy: Search run on 06/14/2017

((pulmonary embolism or pulmonary thromboembolism or pulmonary hypertension) NOT pregnancy) AND  
 (imaging or (CT or computed tomography) or (MRI or magnetic resonance) or (CTA or CT angiography) or (MRA or magnetic resonance angiography or MR angiography) or (PET or position emission tomography) or (SPECT or bone scan)) AND  
 limit to (english language and humans) limit to (yr="2014 -Current")  
 Manual limit to observational studies



**\*Information Resources:**

Ovid EmBase and Medline, NCBI PubMed, National Guideline Clearinghouse, Guidelines International Network, TRIP Database, Choosing Wisely, Cochrane Database, Agency for Healthcare Research and Quality, and numerous specialty society websites  
 Additional Internet and bibliographic searches were performed for all phases of research