

\*Information Resources:

Ovid Medline, NCBI PubMed, National Guideline Clearinghouse, Guidelines International Network, TRIP Database, Choosing Wisely, Cochrane Database, Agency for Healthcare Research and Quality, and numerous specialty society websites  
Additional Internet and bibliographic searches were performed for all phases of research

For use only in connection with development of AUC by the CDI Quality Institute's Multidisciplinary Committee

**Systematic Literature Research –Ovid Medline Database (01/01/2016 – 09/06/2017)**

**PICO: Suspected stress or fragility fracture with negative or indeterminate x-ray**

**High-Level and Prospective Search Strategy:**

(fractur\* and (hip or femoral))

AND

(CT or computed tomography or computed tomography arthrogram or MRI or MRA or magnetic resonance or magnetic resonance arthrogram or bone scan or bone scintigraphy or HDP or MDP or 99mTc or PET CT or PET or SPECT or imaging)

AND

((systemati\* review or (randomiz\* control\* or RCT or randomized controlled trial\*) or guidance or guideline or recommendation or (meta analysis or meta-analysis)) OR (clinical study OR clinical trial, all OR clinical trial, phase i OR clinical trial, phase ii OR clinical trial, phase iii OR clinical trial, phase iv OR clinical trial OR comparative study OR controlled clinical trial OR evaluation studies OR meta-analysis OR multicenter study OR observational study OR pragmatic clinical trial OR randomized controlled trial OR systematic review OR twin study or validation studies).pt))

NOT (case adj2 (report or study or reports or studies))

AND

limit to (english language and humans and yr="2016 -Current" and "all adult (19 plus years)")

**47 results in Ovid**



**\*Information Resources:**

Ovid EmBase and Medline, NCBI PubMed, National Guideline Clearinghouse, Guidelines International Network, TRIP Database, Choosing Wisely, Cochrane Database, Agency for Healthcare Research and Quality, and numerous specialty society websites  
Additional Internet and bibliographic searches were performed for all phases of research

**Systematic Literature Research –Ovid Medline Database (01/01/2016 – 09/06/2017)**

**PICO: Suspected labral tear with or without femoral acetabular impingement, with or without previous surgery**

**High-Level and Prospective Search Strategy:**

(((((labral tear or labrum tear or labral injury or labrum injury) AND (hip or acetabulum or acetabular)) OR (ischioepedic impingement or iliopsoas impingement or ischiotrochanteric impingement or subspinous impingement or subline impingement or trochanteric impingement or ischiofemoral impingement or femoropelvic impingement or femoroacetabular impingement or FAI))

AND

(CT or computed tomography or computed tomography arthrogram or MRI or MRA or magnetic resonance or magnetic resonance arthrogram or bone scan or bone scintigraphy or HDP or MDP or 99mTc or PET CT or PET or SPECT or imaging)

AND

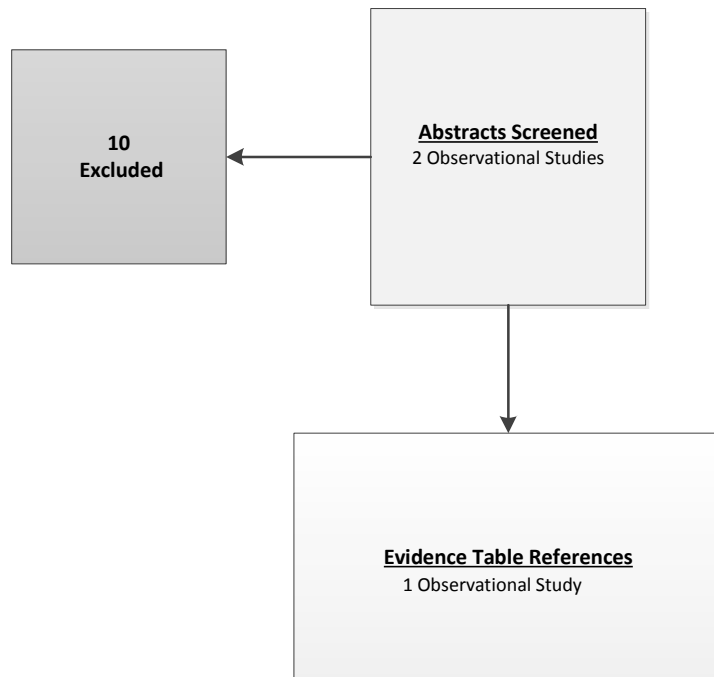
((systemati\* review or (randomiz\* control\* or RCT or randomized controlled trial\*) or guidance or guideline or recommendation or (meta analysis or meta-analysis)) OR (clinical study OR clinical trial, all OR clinical trial, phase i OR clinical trial, phase ii OR clinical trial, phase iii OR clinical trial, phase iv OR clinical trial OR comparative study OR controlled clinical trial OR evaluation studies OR meta-analysis OR multicenter study OR observational study OR pragmatic clinical trial OR randomized controlled trial OR systematic review OR twin study or validation studies).pt))

NOT (case adj2 (report or study or reports or studies))

AND

limit to (english language and humans and yr="2016 -Current" and "all adult (19 plus years)")

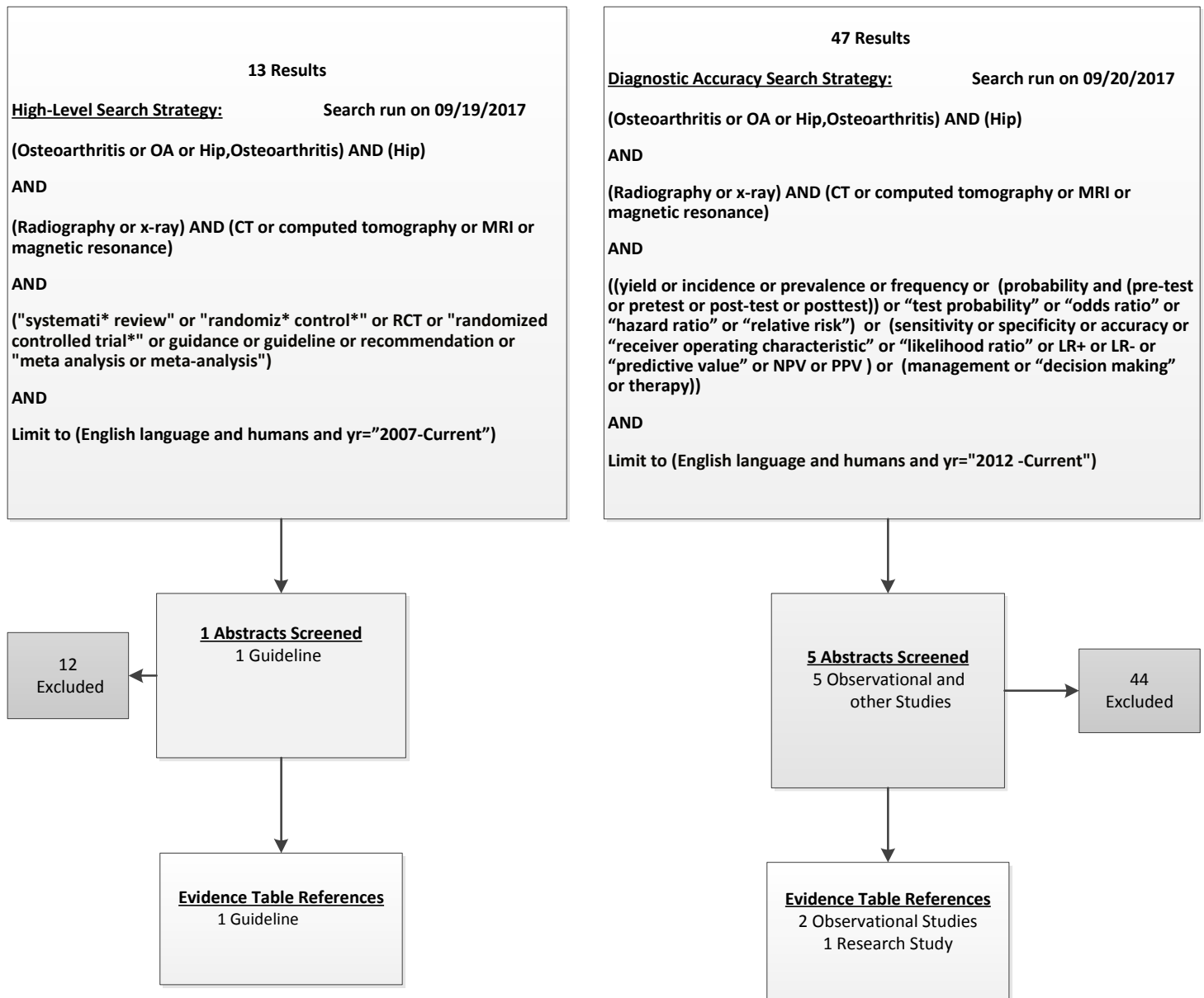
**12 results in Ovid**



**\*Information Resources:**

Ovid EmBase and Medline, NCBI PubMed, National Guideline Clearinghouse, Guidelines International Network, TRIP Database, Choosing Wisely, Cochrane Database, Agency for Healthcare Research and Quality, and numerous specialty society websites  
Additional Internet and bibliographic searches were performed for all phases of research

**Systematic Literature Research – Ovid Embase and Medline Databases (01/01/2007 – 09/20/2017)**



**\*Information Resources:**

Ovid EmBase and Medline, NCBI PubMed, National Guideline Clearinghouse, Guidelines International Network, TRIP Database, Choosing Wisely, Cochrane Database, Agency for Healthcare Research and Quality, and numerous specialty society websites  
Additional Internet and bibliographic searches were performed for all phases of research

For use only in connection with development of AUC by the CDI Quality Institute's Multidisciplinary Committee

**Systematic Literature Research – Ovid Medline Databases (01/01/2015 – 09/06/2017)**

**33 Results**

High-level and Prospective Search Strategy:

Search run on 09/06/2017

((bursitis AND (intertrochanteric OR trochanter\* OR ischial OR iliopsoas OR iliopsoas OR piriformis) AND (tendin\* OR tear OR rupture)))

AND

(CT or (computed tomography) or (computed tomography arthrogram) or MRI or MRA or (magnetic resonance) or (magnetic resonance arthrogram) or (bone scan) or (bone scintigraphy) or HDP or MDP or 99mTc or (PET CT) or PET or SPECT)

AND

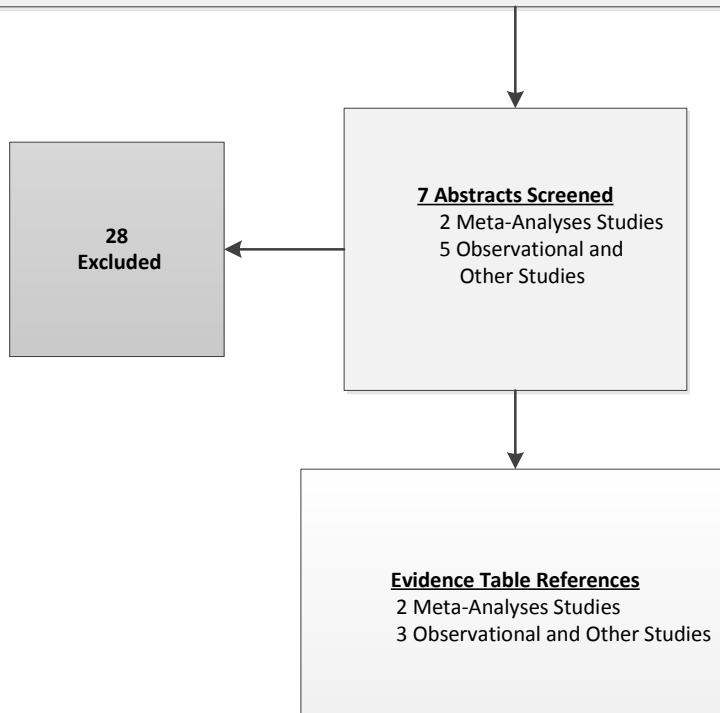
((systemati\* review or (randomiz\* control\* or RCT or randomized controlled trial\*) or guidance or guideline or recommendation or (meta analysis or meta-analysis) OR (clinical study OR clinical trial, all OR clinical trial, phase i OR clinical trial, phase ii OR clinical trial, phase iii OR clinical trial, phase iv OR clinical trial OR comparative study OR controlled clinical trial OR evaluation studies OR meta-analysis OR multicenter study OR observational study OR pragmatic clinical trial OR randomized controlled trial OR systematic review OR twin study or validation studies))

AND

Limit to (English language and humans and yr="2015-Current")

NOT

(case AND (report or study or reports or studies))



**\*Information Resources:**

Ovid EmBase and Medline, NCBI PubMed, National Guideline Clearinghouse, Guidelines International Network, TRIP Database, Choosing Wisely, Cochrane Database, Agency for Healthcare Research and Quality, and numerous specialty society websites  
Additional Internet and bibliographic searches were performed for all phases of research

**Systematic Literature Research – Ovid Medline Databases (01/01/2016 – 09/06/2017)**

**14 Results**

**High-level and Prospective Search Strategy:**

Search run on 09/06/2017

((septic or sepsis or osteomyelitis or (infectious arthritis) or (bacterial arthritis) or (viral arthritis)) AND (Hip or femor\*))

AND

(CT or (computed tomography) or (computed tomography arthrogram) or MRI or MRA or (magnetic resonance) or (magnetic resonance arthrogram) or (bone scan) or (bone scintigraphy) or HDP or MDP or 99mTc or (PET CT) or PET or SPECT)

AND

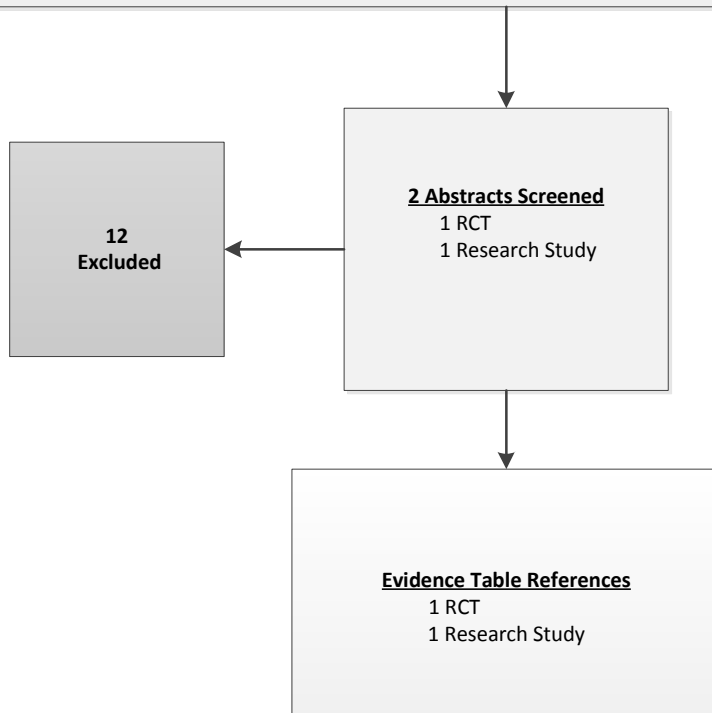
((systemati\* review or (randomiz\* control\* or RCT or randomized controlled trial\*) or guidance or guideline or recommendation or (meta analysis or meta-analysis) OR (clinical study OR clinical trial, all OR clinical trial, phase i OR clinical trial, phase ii OR clinical trial, phase iii OR clinical trial, phase iv OR clinical trial OR comparative study OR controlled clinical trial OR evaluation studies OR meta-analysis OR multicenter study OR observational study OR pragmatic clinical trial OR randomized controlled trial OR systematic review OR twin study or validation studies))

AND

Limit to (English language and humans and yr="2016-Current")

NOT

(case AND (report or study or reports or studies))



**\*Information Resources:**

Ovid EmBase and Medline, NCBI PubMed, National Guideline Clearinghouse, Guidelines International Network, TRIP Database, Choosing Wisely, Cochrane Database, Agency for Healthcare Research and Quality, and numerous specialty society websites  
Additional Internet and bibliographic searches were performed for all phases of research

**Systematic Literature Research – Ovid Medline Databases (01/01/2007 – 09/06/2017)**

**235 Results**

High-level and Prospective Search Strategy:

Search run on 09/06/2017

((Neoplasm\* or metastasis or malignanc\* or tumor or lytic or sclerotic or sclerosis or blastic) AND (Hip or femor\*))

AND

(CT or (computed tomography) or (computed tomography arthrogram) or MRI or MRA or (magnetic resonance) or (magnetic resonance arthrogram) or (bone scan) or (bone scintigraphy) or HDP or MDP or 99mTc or (PET CT) or PET or SPECT)

AND

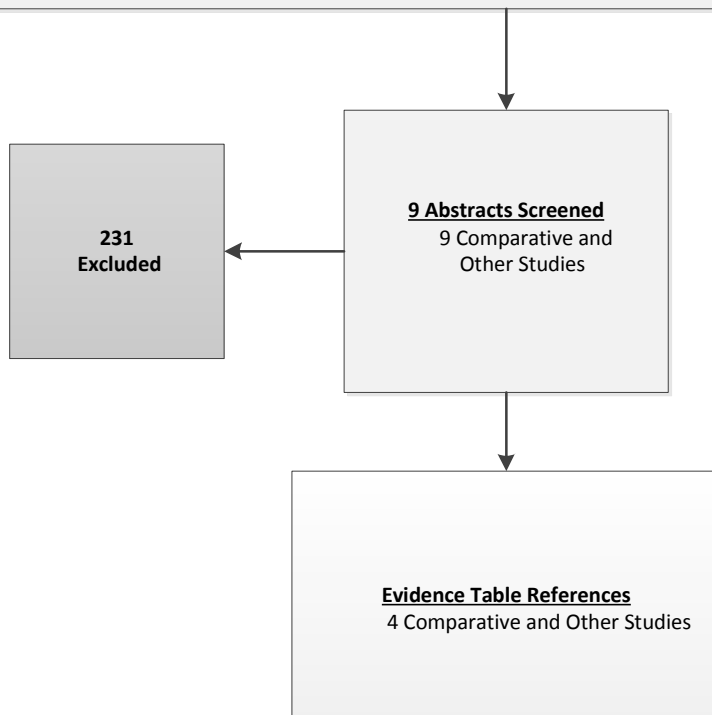
((systemati\* review or (randomiz\* control\* or RCT or randomized controlled trial\*) or guidance or guideline or recommendation or (meta analysis or meta-analysis) OR (clinical study OR clinical trial, all OR clinical trial, phase i OR clinical trial, phase ii OR clinical trial, phase iii OR clinical trial, phase iv OR clinical trial OR comparative study OR controlled clinical trial OR evaluation studies OR meta-analysis OR multicenter study OR observational study OR pragmatic clinical trial OR randomized controlled trial OR systematic review OR twin study or validation studies))

AND

Limit to (English language and humans and yr="2007-Current")

NOT

(case AND (report or study or reports or studies))



**\*Information Resources:**

Ovid EmBase and Medline, NCBI PubMed, National Guideline Clearinghouse, Guidelines International Network, TRIP Database, Choosing Wisely, Cochrane Database, Agency for Healthcare Research and Quality, and numerous specialty society websites  
Additional Internet and bibliographic searches were performed for all phases of research