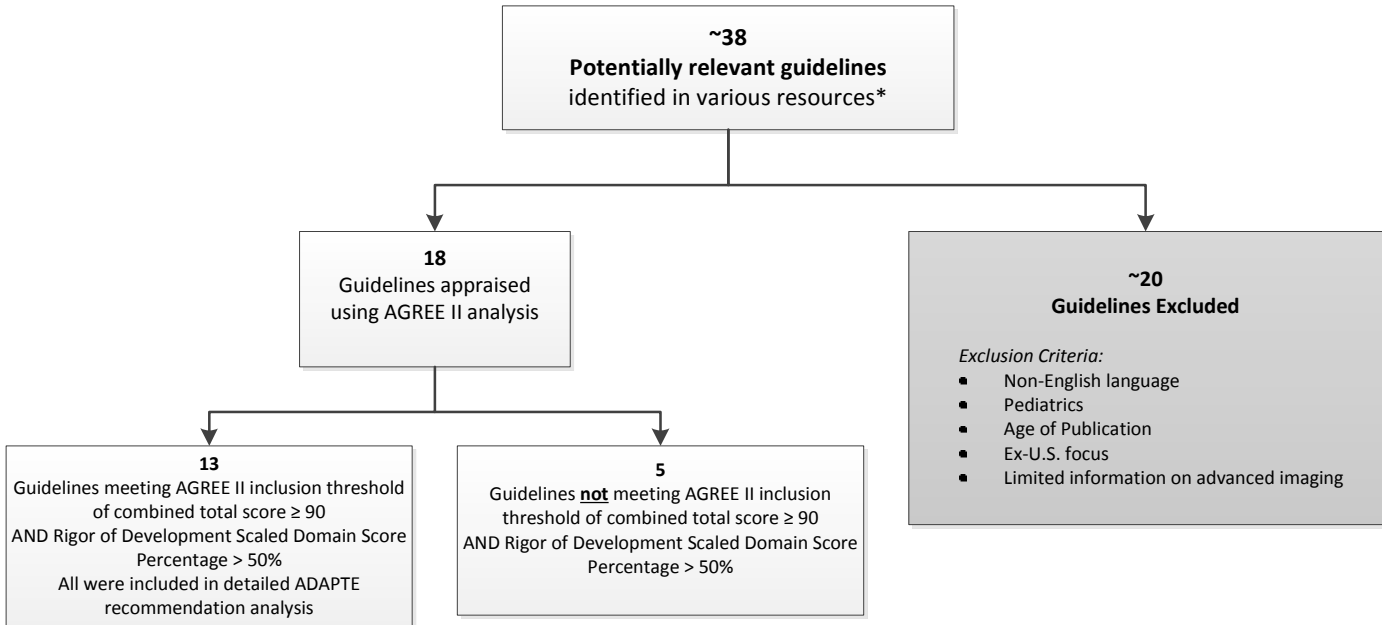


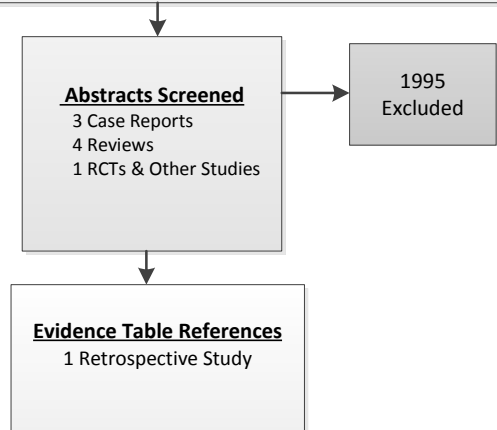
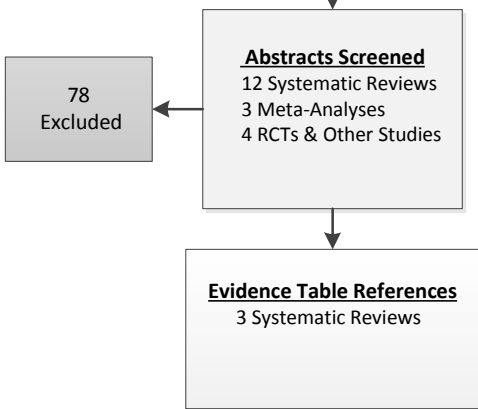
Guideline Review using ADAPTE method and AGREE II instrument – as of 05-30-17



Systematic Literature Research – Ovid EmBase and Medline Databases (07/10/2012 – 08/07/2017)

97 Results
High-Level Research Search Strategy: Search run on 07/10/2017
 (Headache* OR (cranial pain) OR cephalgia* OR hemicrania OR (trigeminal autonomic cephalgia*) OR Migraine* OR (Status Migrainosus))
 AND
 (imaging OR (CT OR (computed tomography)) OR (MRI OR (magnetic resonance) OR (cerebral angiogra*)) OR (computed tomography angiograph*) OR CTA OR (magnetic resonance angiograph*) OR MRA)
 AND
 ((systemati* review) OR (randomiz* control* OR RCT OR randomized controlled trial*) OR guidance OR guideline OR recommendation OR (meta analysis OR meta-analysis))
 AND
 Limit: English, Human, Adult
 Limit: year= (2012 to present)

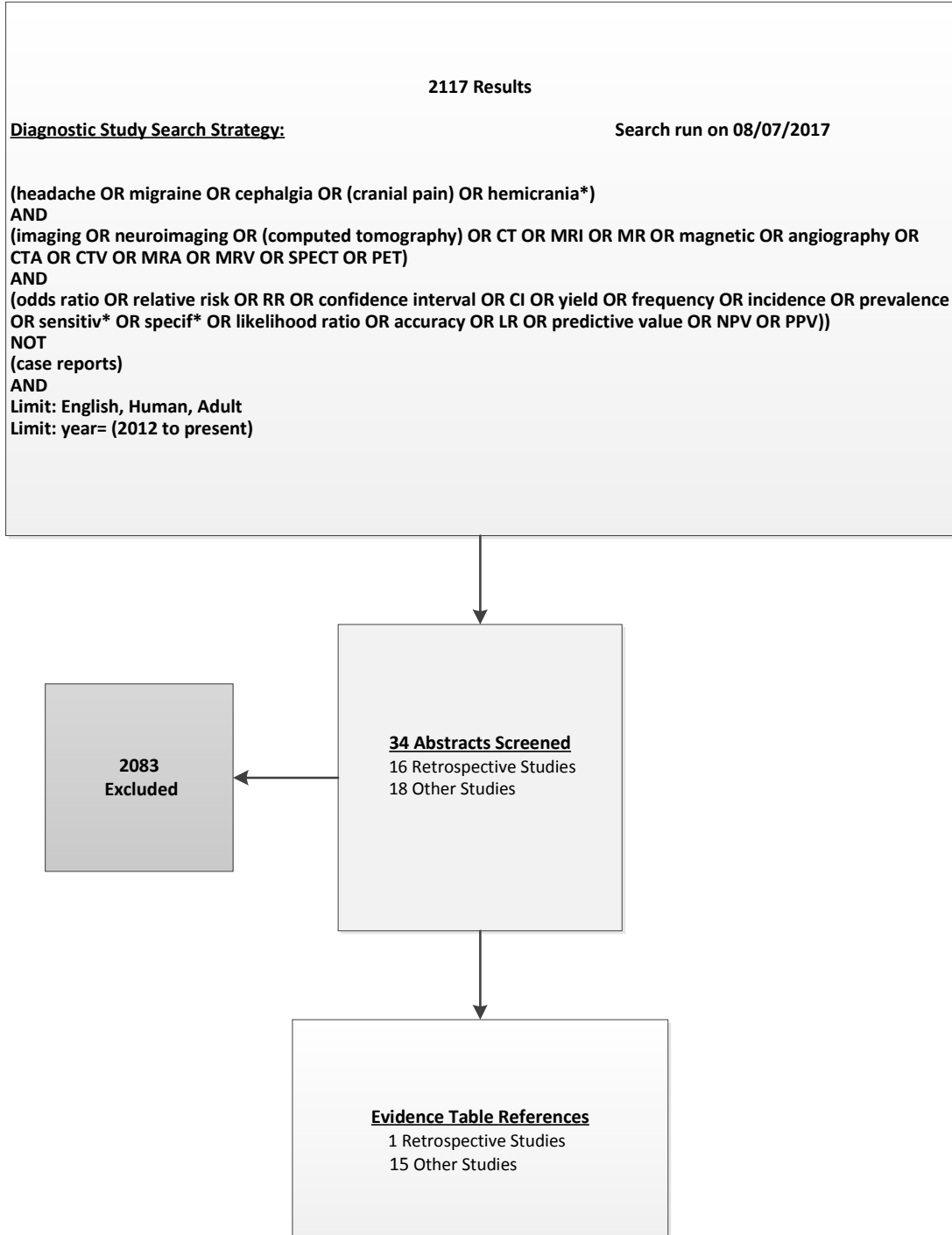
2003 Results
Prospective Study Search Strategy: Search run on 07/18/2017
 (Headache* OR (cranial pain) OR cephalgia* OR hemicrania OR (trigeminal autonomic cephalgia*) OR Migraine* OR (Status Migrainosus))
 AND
 (imaging OR (CT OR (computed tomography)) OR (MRI OR (magnetic resonance) OR (cerebral angiogra*)) OR (computed tomography angiograph*) OR CTA OR (magnetic resonance angiograph*) OR MRA)
 AND
 (classical article or clinical conference or clinical study or clinical trial, all or clinical trial, phase i or clinical trial, phase ii or clinical trial, phase iii or clinical trial, phase iv or clinical trial or comparative study or consensus development conference or consensus development conference, nih or controlled clinical trial or "corrected and republished article" or english abstract or evaluation studies or introductory journal article or journal article or lectures or multicenter study or observational study or pragmatic clinical trial or "research support, american recovery and reinvestment act" or research support, nih, extramural or research support, nih, intramural or research support, non us gov't or research support, us gov't, non phs or research support, us gov't, phs or "review" or "scientific integrity review" or technical report or validation studies))
 AND
 Limit: English, Human, Adult
 Limit: year= (2012 to present)



***Information Resources:**

Ovid EmBase and Medline, NCBI PubMed, National Guideline Clearinghouse, Guidelines International Network, TRIP Database, Choosing Wisely, Cochrane Database, Agency for Healthcare Research and Quality, and numerous specialty society websites
 Additional Internet and bibliographic searches were performed for all phases of research

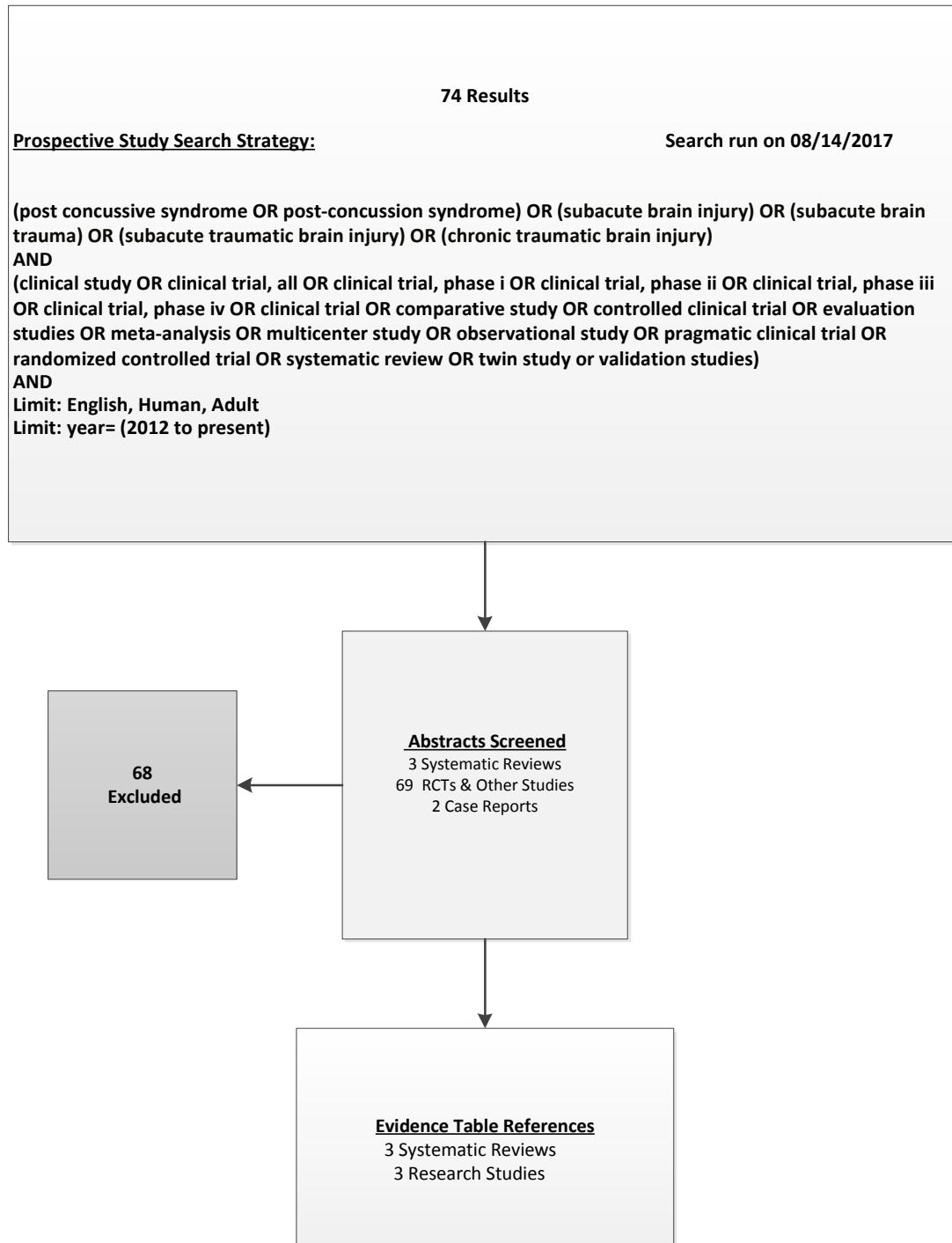
Systematic Literature Research – Ovid Medline Databases (07/10/2012 – 08/07/2017)



***Information Resources:**

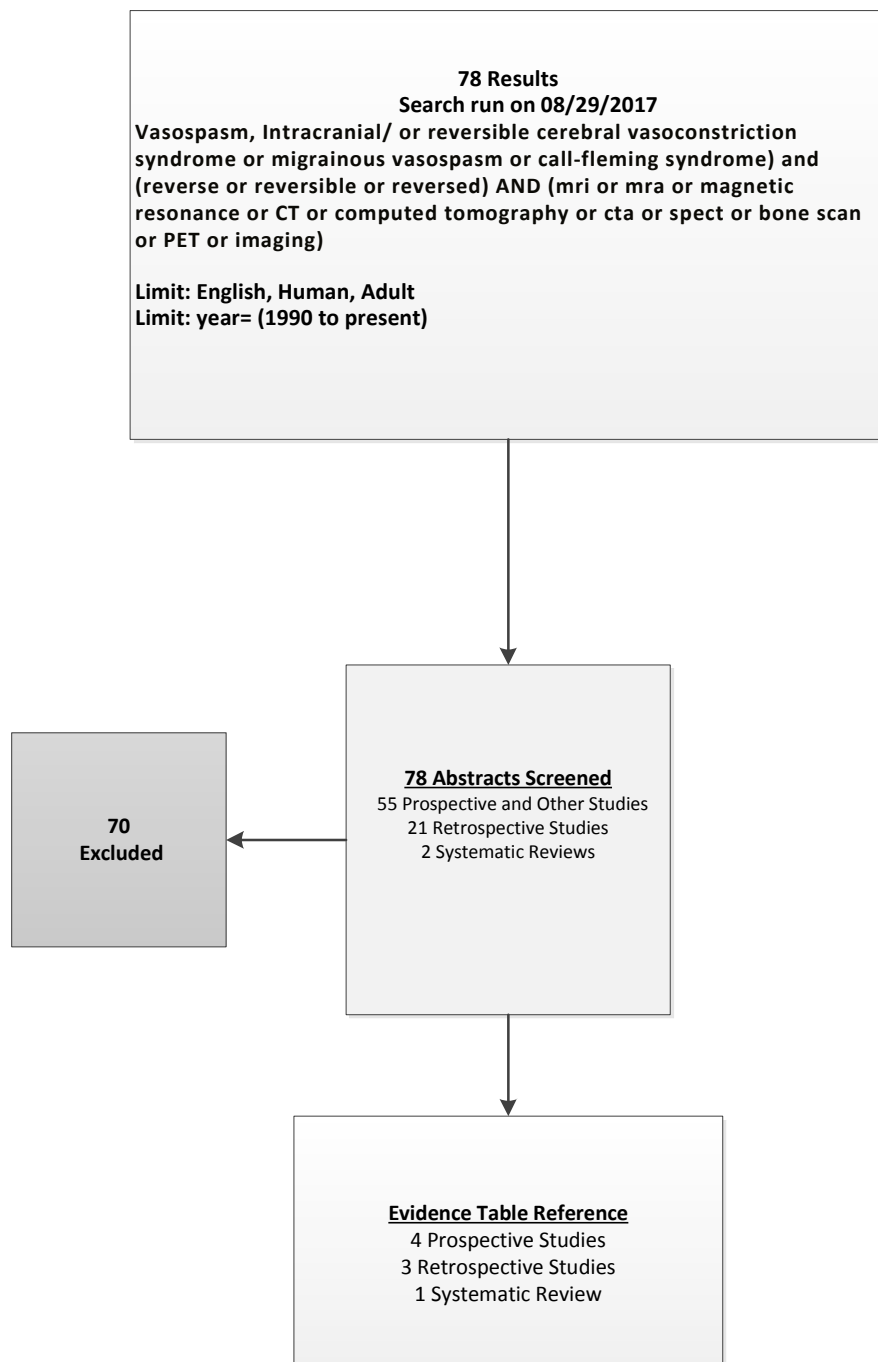
Ovid EmBase and Medline, NCBI PubMed, National Guideline Clearinghouse, Guidelines International Network, TRIP Database, Choosing Wisely, Cochrane Database, Agency for Healthcare Research and Quality, and numerous specialty society websites
Additional Internet and bibliographic searches were performed for all phases of research

Systematic Literature Research –Ovid Medline & Embase Databases (01/01/2012 – 08/14/2017)

***Information Resources:**

Ovid EmBase and Medline, NCBI PubMed, National Guideline Clearinghouse, Guidelines International Network, TRIP Database, Choosing Wisely, Cochrane Database, Agency for Healthcare Research and Quality, and numerous specialty society websites
Additional Internet and bibliographic searches were performed for all phases of research

Systematic Literature Research –Ovid Medline & Embase Databases (01/01/1990– 08/29/2017)



***Information Resources:**

Ovid EmBase and Medline, NCBI PubMed, National Guideline Clearinghouse, Guidelines International Network, TRIP Database, Choosing Wisely, Cochrane Database, Agency for Healthcare Research and Quality, and numerous specialty society websites
Additional Internet and bibliographic searches were performed for all phases of research